

# TECHNICAL ADVISORY COMMITTEE

## WHITE WOLF PROJECTS AND MANAGEMENT ACTIONS COMMITTEE

KICKOFF MEETING  
9 FEBRUARY 2023

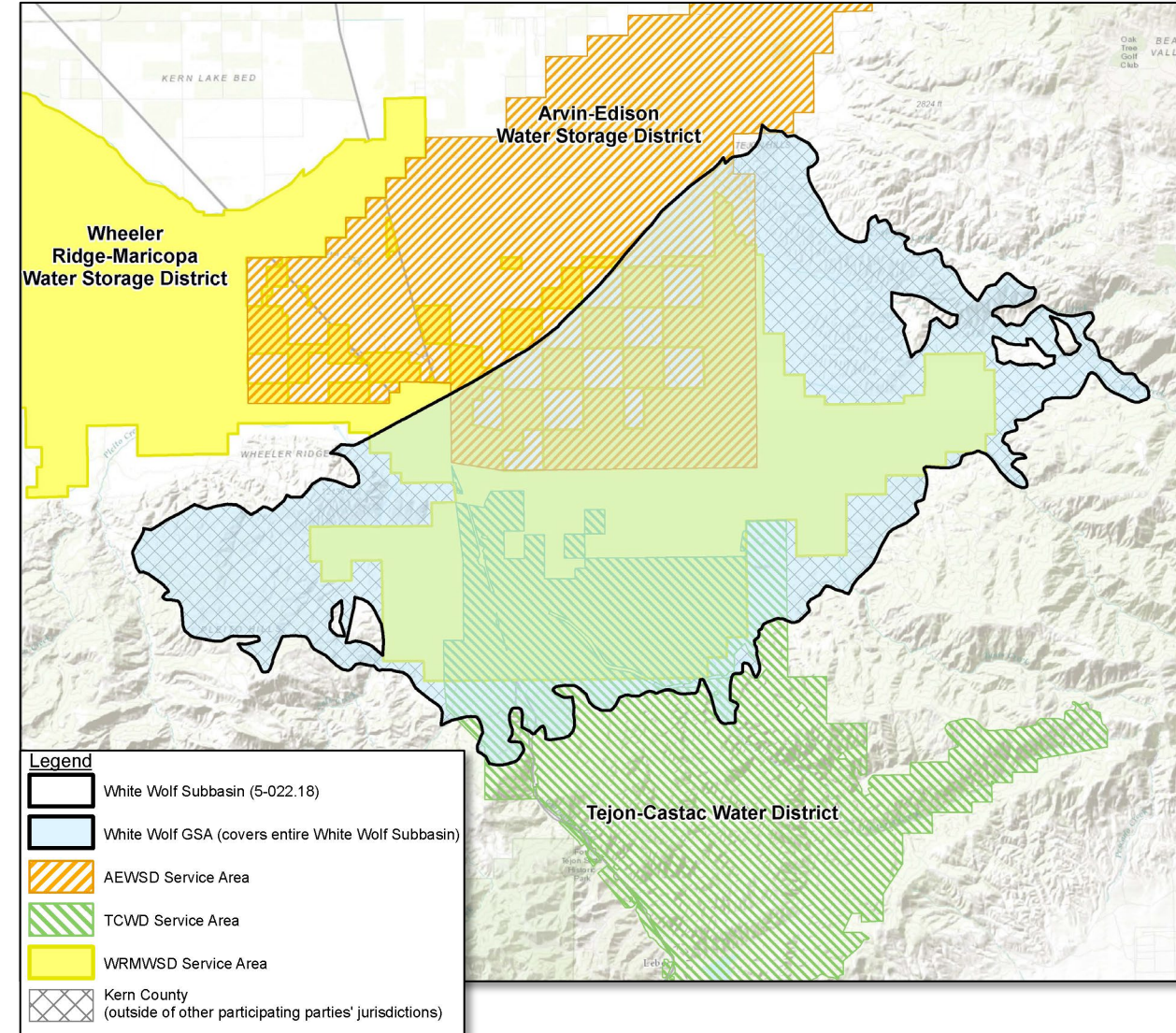


# OUTLINE

- Introductions
- State of the White Wolf Subbasin
- White Wolf Projects and Management Actions (P/MAs) Committee structure
- Identifying goals and priorities
- Action Item – Multi-benefit Land Repurposing Grant Application support
- Questions and future considerations for the P/MA Committee

# INTRODUCTIONS

- Who we are: White Wolf Groundwater Sustainability Agency (GSA)
  - Arvin-Edison Water Storage District
  - Tejon-Castac Water District
  - Wheeler Ridge-Maricopa Water Storage District
  - Kern County
- **Around the room – please introduce yourself!**



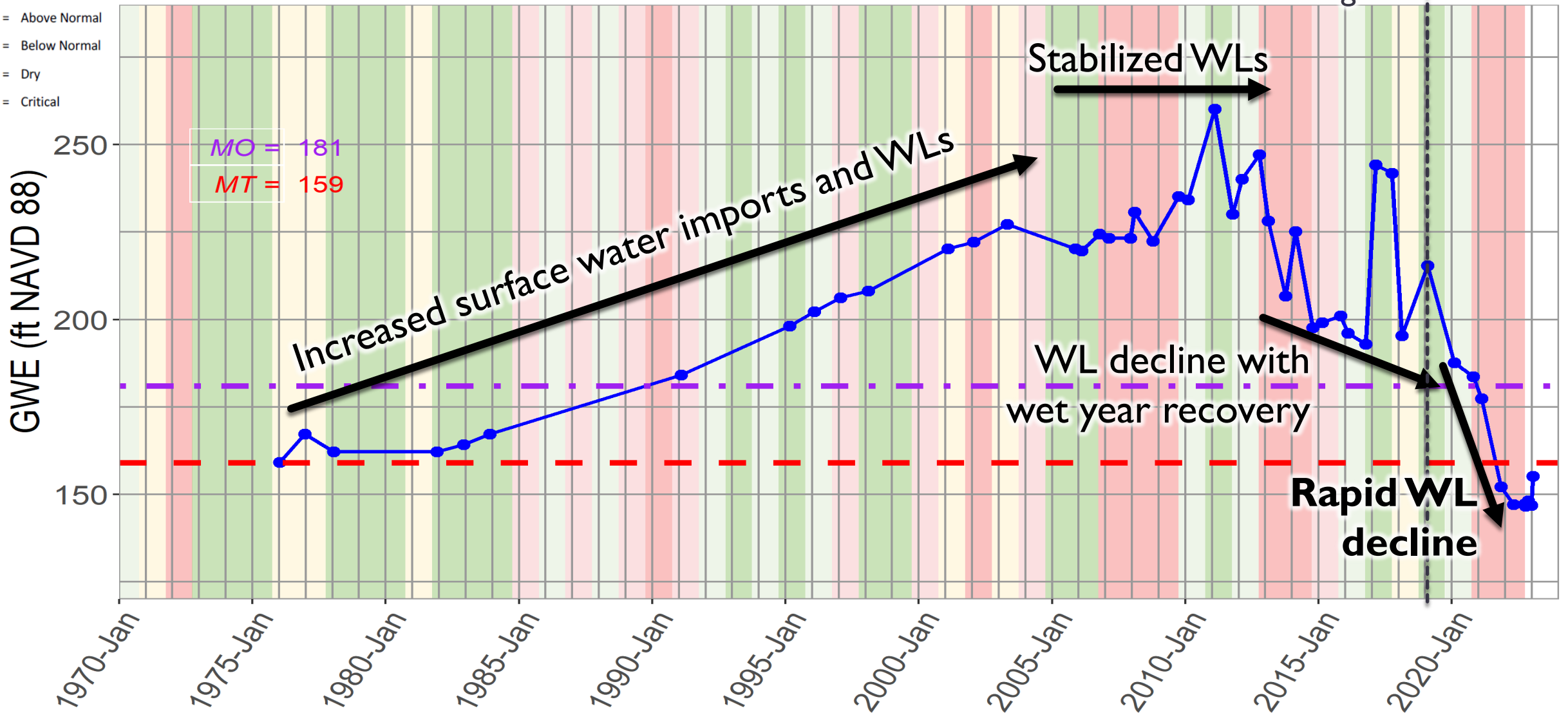
# STATE OF THE WHITE WOLF SUBBASIN

## RMW-WWB-010

Feb 2019:  
Basin priority  
downgrade

DWR Water Year Type

- Wet
- Above Normal
- Below Normal
- Dry
- Critical

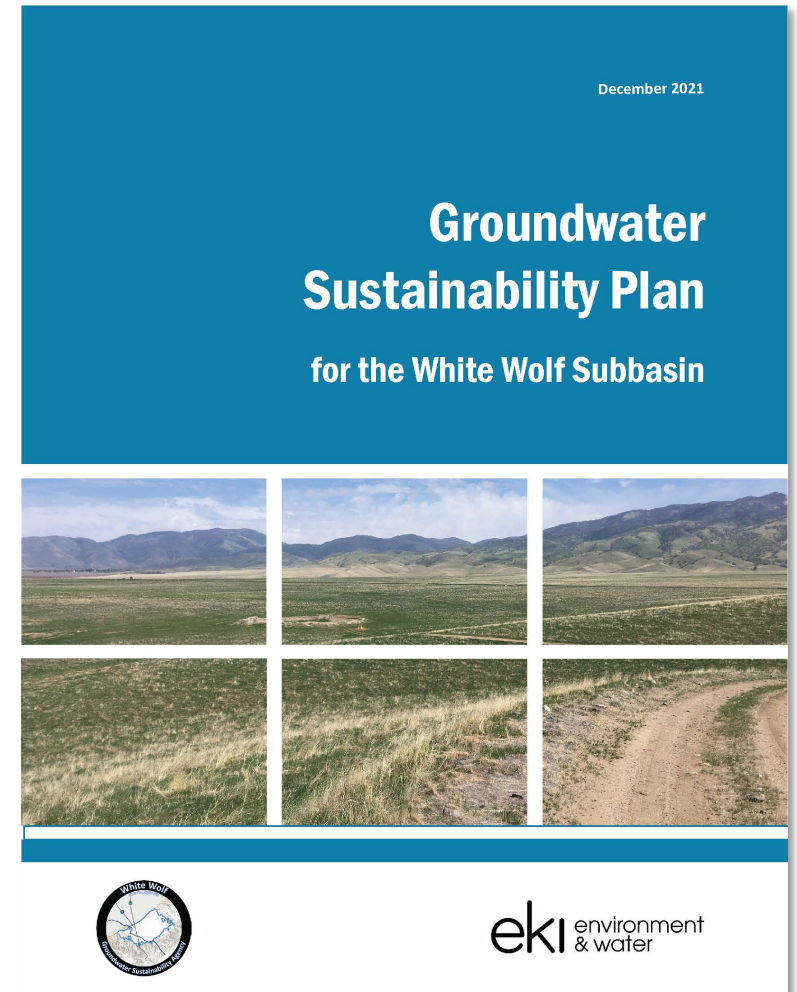


# POLL: HAVE YOU SEEN IMPACTS IN YOUR AREA?

- Dry well?
- Multiple dry wells?
- Reduced well production capacity?
- Reduced water availability?
- Water quality impacts?
- Lower your pump intake?
- Well collapse?
- Increased energy costs?
- Other?

# WHITE WOLF P/MAs

- The White Wolf GSP includes:
  - Thirteen (13) Water Supply Augmentation Projects: Capital investments (i.e., infrastructure) to generate, store or deliver additional water supply.
  - Eight (8) Water Demand Reduction Management Actions: Proposed policies or programs that support the reduction of water demands.
  - Three (3) “Other” P/MAs
- The purpose of the P/MAs committee is to provide recommendations to the GSA Board to facilitate P/MA initiation and implementation



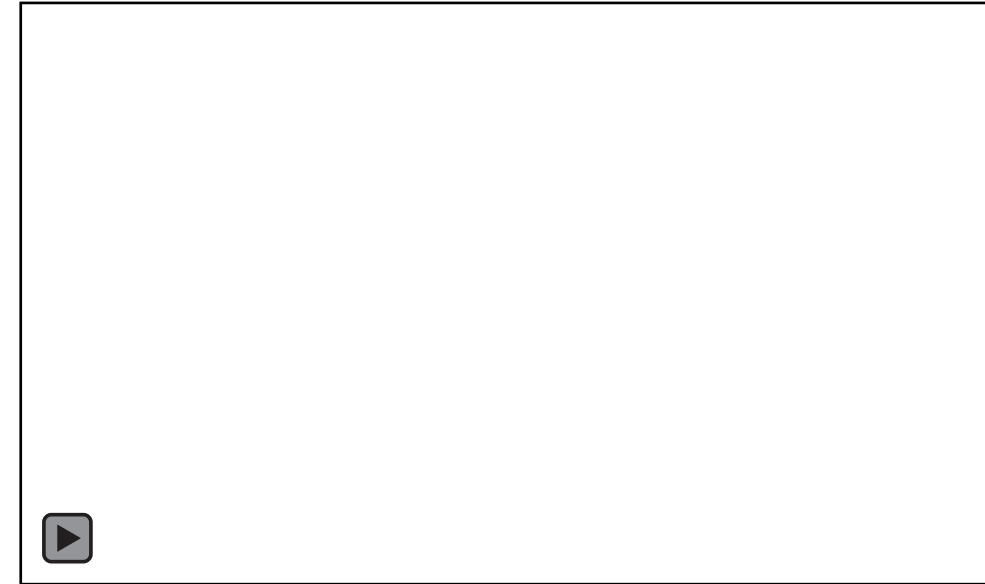
# WORKING TOWARDS SUSTAINABILITY - SUPPLY

- Projects included in the SGMA Implementation Round 2 grant application:

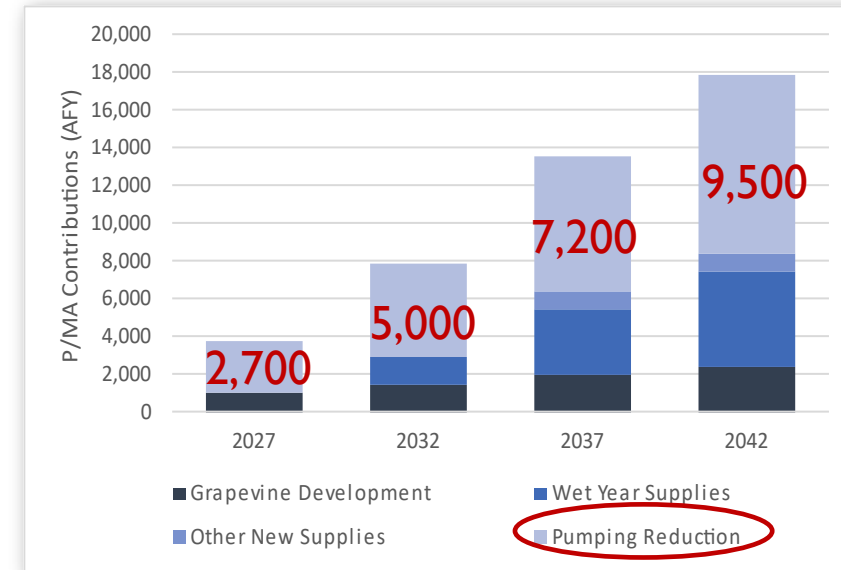
Project	Expected Benefit
“South Canal” 850 Canal Intertie	950 AFY
In-Lieu Banking Program	3,570 - 5,510 AFY
Oilfield Reclaimed Water from the Tejon Oilfield Phase 2 Pilot Plant	940 - 2,820 AFY
Tejon Recharge Facility Project	800 AFY with potential to recharge up to 50,000 AFY

# WORKING TOWARDS SUSTAINABILITY - DEMAND

- Water supply projects are in the works but take a long time to develop.
- P/MA Committee near-term focus will be on **Management Actions related to demand reductions**
  - Demand reduction identified as the first 5-year GSP implementation action
  - Pumping reductions must occur to meet sustainability goal



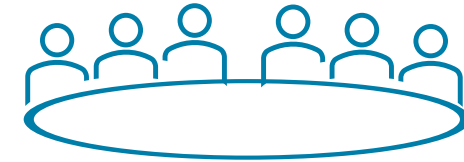
ble  
graph.  
ted water  
nder 2030  
e change  
ted water  
nder P/MA  
ath scenario





# TIERED P/MA COMMITTEE STRUCTURE

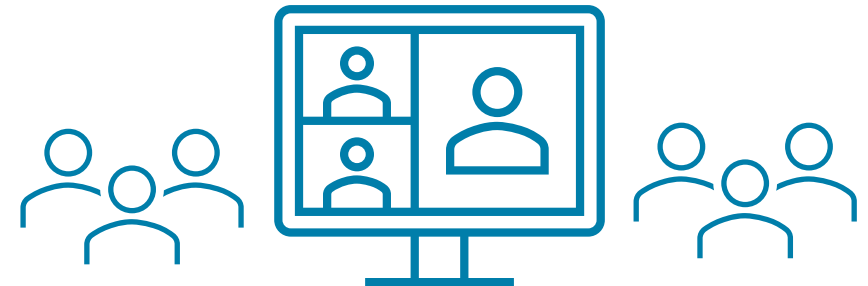
- Board Ad-hoc Committee
  - One director from each member district
  - Anticipated quarterly meetings for 2023
- Technical Advisory Committee (TAC)
  - Member district staff, volunteer landowners, non-profit representatives
  - Anticipated monthly meetings for 2023



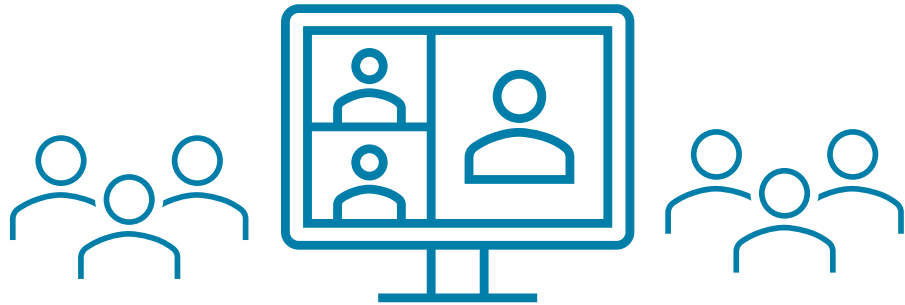
Board Ad-hoc Committee to provide policy recommendations to WWGSA Board



TAC to provide detailed review and technical guidance to Board Ad-hoc Committee



# COMMITTEE FOCUS

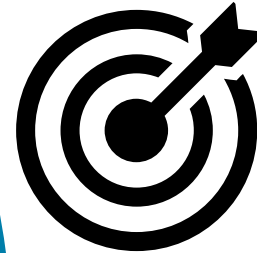


**TAC** will focus on how best to reduce the storage deficit



**Board Ad-hoc Committee** will focus on policies to support P/MAs initiation

# POLL AND DISCUSSION: IDENTIFYING GOALS AND PRIORITIES



## Goals

- Community engagement
- ??

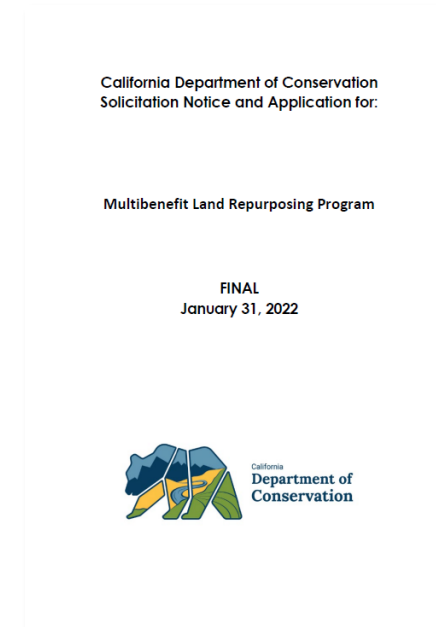


## Priorities

- Land repurposing program initiation
- ??

# ACTION ITEM – MULTIBENEFIT LAND REPURPOSING GRANT APPLICATION SUPPORT

- Awards of up to \$8.89M
- Proposal summary must include:
  - Development of a Multibenefit Agricultural Land Repurposing Plan
  - Land repurposing project implementation
  - Support of partner and collaborators’ capacity needs
  - Outreach, education, and training to facilitate and build capacity to conduct land repurposing
  - Monitoring to ensure defined conservation outcomes



## **Key Deadlines:**

Solicitation Notice and Applications Released	1/31
Applications due	3/29
Awards announced	6/1

# KEY FEEDBACK FROM ROUND 1 APPLICATION

- How will GSA solicit stakeholder input?
- How will barriers to participation be mitigated?
- What is the coordination process between partners?
- Expand partnerships to include environmental justice voices

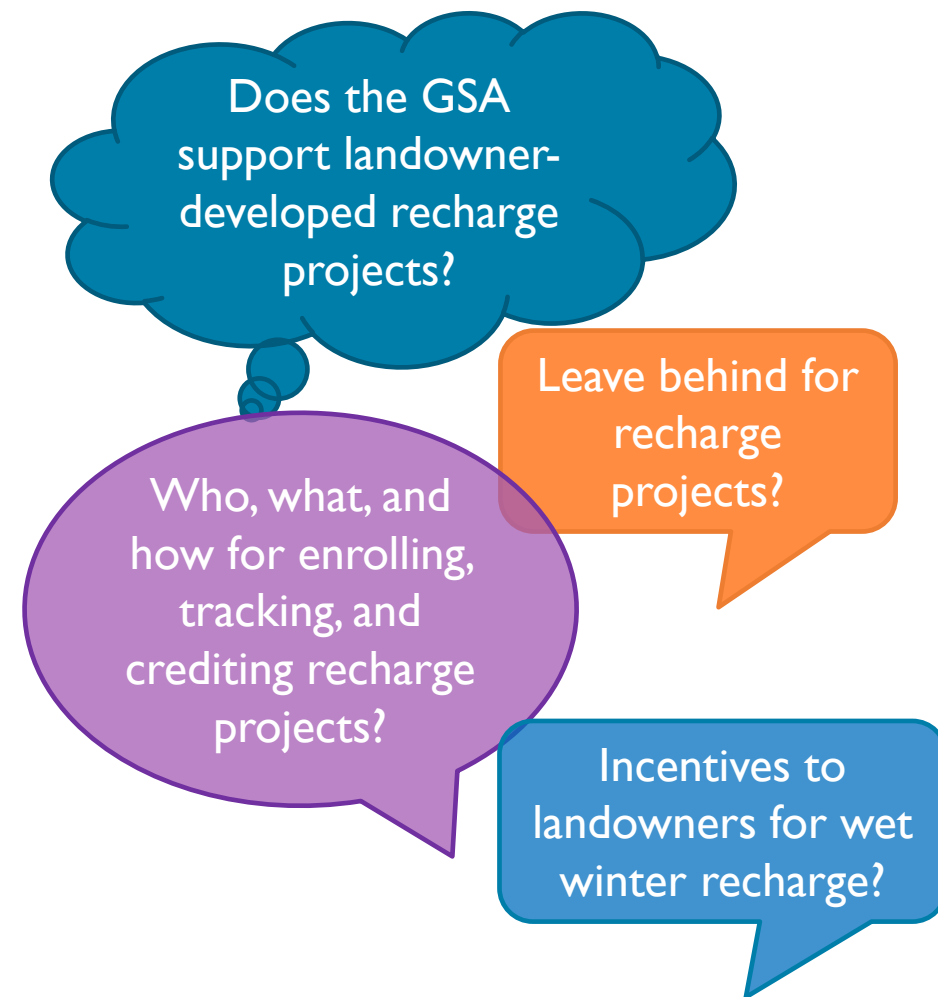
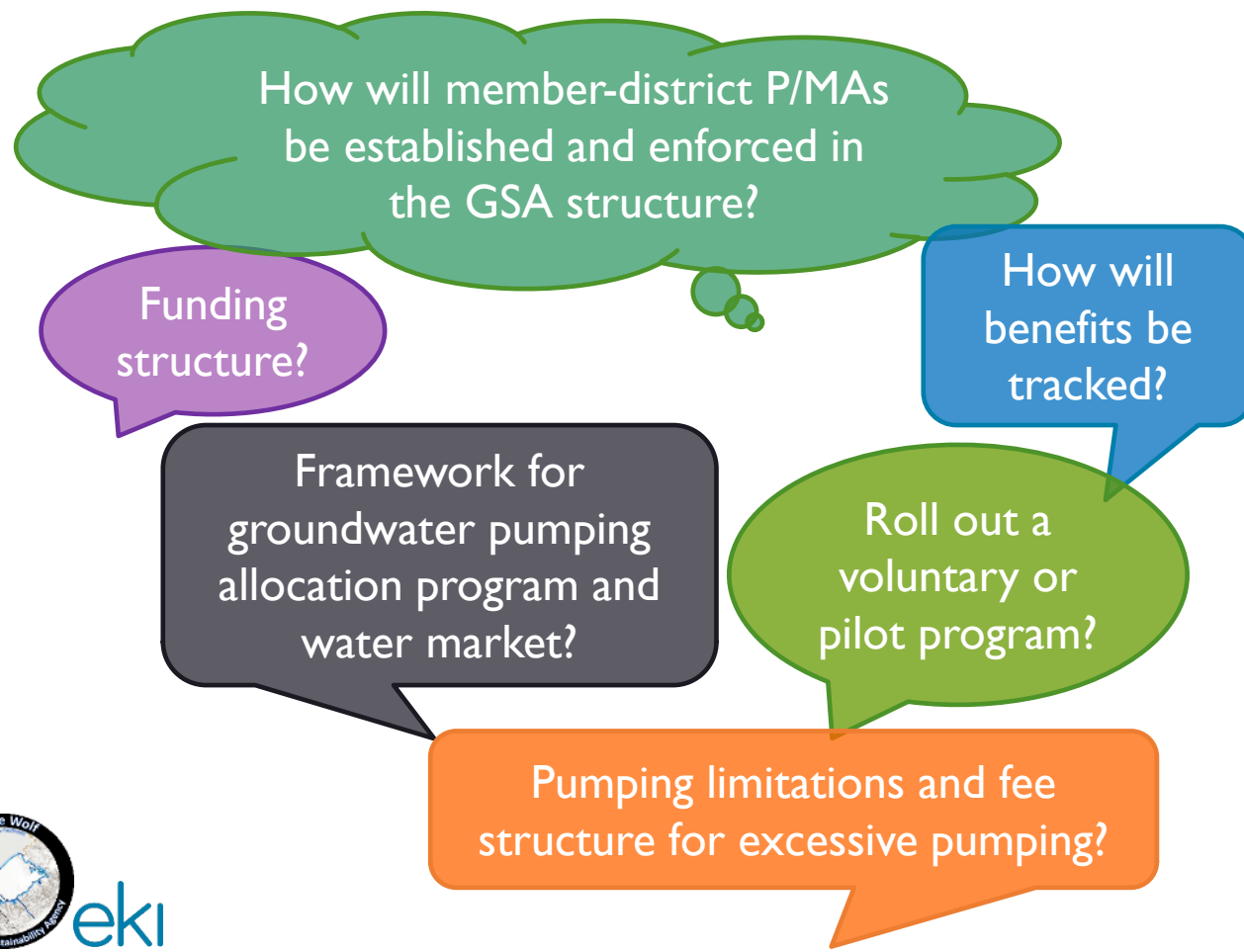
# WE NEED MORE PARTICIPATION!

- Are you willing to be an active Partner or Collaborator for the Land repurposing program?
- Do you have ideas on how we can expand stakeholder engagement and participation?

“Partnering is defined as commitments by other organizations, government agencies, private citizens or volunteer groups to provide funds or in-kind services.”

“Collaboration is defined as working with other organizations, government agencies, groups, and individuals to ensure that all entities work in agreement and are non-duplicative of each other’s activities, and to ensure that diverse interests are meaningfully incorporated into the block grant recipient’s work.”

# POLL AND DISCUSSION: WHAT POLICY RELATED QUESTIONS SHOULD THE P/MA COMMITTEE TACKLE FIRST?



# QUESTIONS



Anona Dutton, P.G., C.Hg.

[adutton@ekiconsult.com](mailto:adutton@ekiconsult.com)

650-292-9100

Angelica Martin

[amartin@tejonranch.com](mailto:amartin@tejonranch.com)

661-663-4262

<http://whitewolfgsa.org/>

